



KSHEMA INTERNATIONAL HEALTHCARE CONFERENCE AND EXPO

26TH-28TH APRIL 2024
K. S. HEGDE MEDICAL ACADEMY, MANGALURU

SPONSORSHIP BROCHURE



K S HEGDE
MEDICAL ACADEMY

ABOUT NITTE



NITTE
(Deemed to be University)

Nitte (Deemed-to-be University) has its roots in a group of Institutions established by the Nitte charitable trust in 1979 by one of India's most respected Statesman, Late Justice KS Hegde, Supreme Court Judge and Speaker of Lok Sabha, with the mission of empowering rural youth through quality education and healthcare.

The Trust has established 36 institutions spread in three campuses at Nitte, Mangaluru and Bangalore. It offers education in diverse areas of learning including health professions education, engineering, management, humanities, general education, vocational training, and school/pre-university caucation.

The University offers a total of 74 programs in the disciplines of medicine, allied health sciences, dentistry, pharmacy, nursing physiotherapy, speech and audiology, biological sciences, media & communication and Architecture. It has 4600+ students, 575 faculty members and 2175 support staff on roll. The University received A+ Grading in NAAC accreditation in 2021. It has been consistently placed in the top rank bands in NIRF, QS Rankings for Asia Region as well as QS I-Gauge India Ratings.

ABOUT KSHEMA

Established in 1999, K.S. Hegde Medical Academy (KSHEMA) became a constituent college of Nitte (Deemed to be University) in 2009.

The Institution has made rapid progress towards being recognized as a medical school with high academic standards, delivering quality health care with an emphasis on promoting social responsibility in its students. In alignment with the vision and mission of Nitte (Deemed to be University), KSHEMA strives to generate competent and humane professionals empowered to face future challenges.

The Institution offers MBBS, MD/MS and MCh programs recognized by the Medical Council of India. Besides this, it offers myriad of B.Sc courses. Justice K.S. Hegde Charitable Hospital, the NABH Accredited 1200 bed super-speciality hospital attached to the Institution serves as a teaching hospital for all the affiliated courses and provides all levels of holistic health care including major super-speciality services and provides excellent training opportunities to the students of the academy



THE CONFERENCE

N-Vision is a gathering of diverse minds to stimulate exchange of groundbreaking ideas, innovations and collaborations to propose the future of health care.

We have planned 3 days of interactive sessions with renowned speakers and panelists, a multitude of workshops, cultural programme such as Stand up comedy and concert, engaging quizzes along with paper poster presentations.

K. S. Hegde Medical Academy, Mangaluru brings to you the conference of the future, come take a walk.



HEALTHCARE EXPO

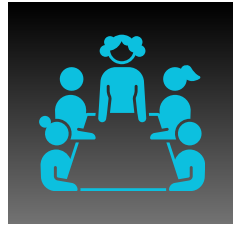
In keeping with our theme "Walking into the Future of Healthcare", we are positively engaged to bring the future to the present.

This year to sneak a peak into the cutting edge advancements of healthcare we introduce a Medical Expo. Innovations from all branches, not limited to medicine, dental sciences, physiotherapy, nursing, engineering are welcome to foster and share their emerging ideas.

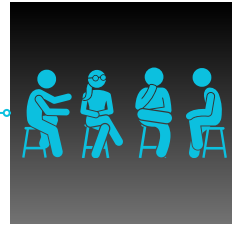
The goal is to bring ideas alive, utilizing live exhibits to bring forth latest therapeutics and diagnostic modalities. Open for all, this unique, one of a kind expo will certainly set the precedent for all medical conferences.



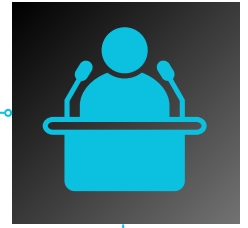
EVENT SPECTRUM



MULTIFACETED
CONFERENCE



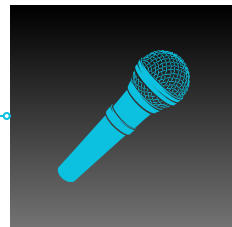
PANEL
DISCUSSION



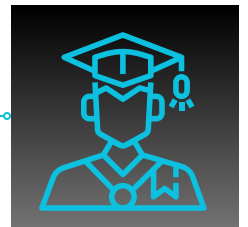
GUEST
LECTURER



HEALTHCARE
EXPO



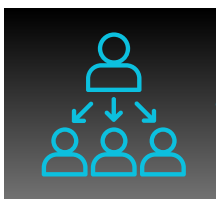
CULTURAL
EVENING



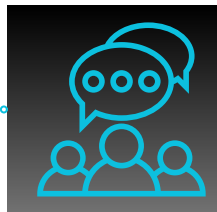
ALUMINI
PAVILION



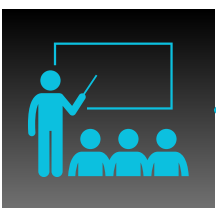
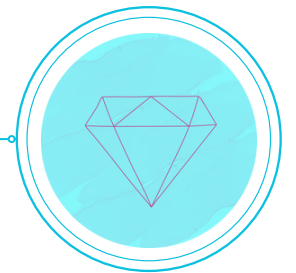
HIGHLIGHTS



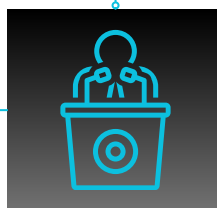
1500+
DELEGATES



15+
SESSIONS



10
WORKSHOPS



30+
SPEAKERS

SPONSORSHIPS

N VISION

KSHEMA

1 PLATINUM SPONSORSHIP

5,00,000/- rupees



- Branding and publicity through:
 - Conference announcements
 - Website and social media
- Branding in trade area/ trade exhibition space/ concert venue
- One stall measuring 16×6 feet at prime location for 3 days
- Registration for 3 officials will be complimentary

2 CULTURAL EVENING SPONSORSHIP

5,00,000/- rupees

- Branding displayed in:
 - Cultural evening set-up and invites
 - Website and social media
- One stall measuring 16x6 feet at prime location for 3 days
- Registration for 3 officials will be complimentary.



SPONSORSHIPS

N VISION

KSHEMA

3 DELEGATE KIT SPONSORSHIP

4,00,000/- rupees

- Branding on the delegate kit
- Company literature (provided by the company) in the delegate bags
- Branding in all halls, website and social media
- One stall measuring 16×6 feet at prime location for 3 days
- Registration for 3 officials will be complimentary



4 DINING SPONSORSHIP

3,00,000/- rupees

- Includes Inaugural Dinner and refreshments sponsorshp
- Exclusive panels at the dining area
- One stall measuring 16×6 feet at prime location for 3 days
- Registration for 3 officials will be complimentary
- Branding on website and social media



SPONSORSHIPS

N-VISION

KSHEMA

5 TRADE EXHIBITION

A) Premium (16ft x 6ft) - 10 stalls
[2,00,000/- rupees per stall]

B) Basic (10ft x 6ft) - 20 stalls
[1,00,000/- rupees per stall]

- Stall at trade exhibition venue for 3 days
- Registration for 2 officials will be complimentary
- Branding in Website and social media

6 CONTESTS SPONSORSHIP

1,00,000/- rupees

- Standee at the conference for 3 days
- Title sponsorship and naming rights at the competitions.
- Kindly note: Standee will be provided by the sponsor



SPONSORSHIPS

N-VISION

KSHEMA

7 HALL/ SESSION SPONSORS

1,00,000/- rupees

- Display of banner/ standee in the respective hall
- Branding through website and social media
- Kindly note: Standee will be provided by the sponsor



8 BANNER/ ADVERTISEMENT/ STANDEE (6ftx2ft)

50,000/- rupees

- Display on screen in trade exhibition venue
- Kindly note: Standee will be provided by the sponsor

SPONSORSHIPS

N VISION

KSHEMA

WHY EXHIBIT?

The city of Mangaluru is nothing less than a medical hotspot, bustling with eight medical institutions and over three thousand medical professionals, the city is advancing Medicine at the speed of light.

Companies that sponsor N-VISION 2024 will have the opportunity to advertise and market their products to not only external participants, instructors, and students, but also to hundreds of healthcare professionals from institutions all over the country.

Sponsors can sell their products in a variety of ways throughout the Expo, as detailed in the sponsorship avenues. Participants will be able to purchase products from the sponsoring bodies if coupons or fliers are included in their registration packages.





BANK DETAILS

Name of the Account	Nitte Deemed to be University
Account No	02452200055610
Name of the Bank	Canara Bank
Address of the Bank	ABSMIDS Branch, Deralakatte
SWIFT Code	CNRBINBBFD
Branch Code	10245
IFSC Code	CNRB0010245

CONTACT US



Phone Number	+91 97417 89110
Email	nvision.kshema@nitte.edu.in
Website	www.nvisionkshema.com